

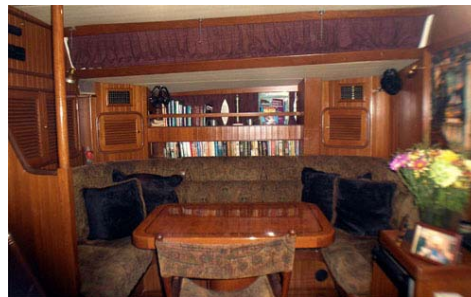
Custom Built 58 Beeldnijder “INFINITY” FOR SALE



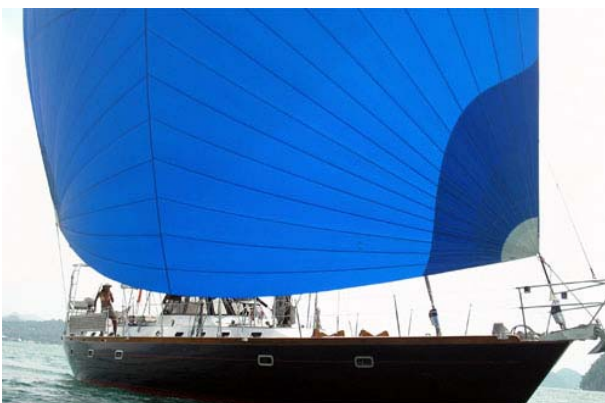
Infinity's brief was to build the highest quality safe, comfortable and fast world cruising yacht possible. There was no budget, hence only the highest quality materials and equipment were chosen.



SAFETY: All sailing operations are carried out without leaving the safety of the cockpit, reefing is simple just push a button. Safety is an interior designed for use in a seaway. Safety is a solid hand-lay up GRP hull. Safety is a keel with encapsulated ballast and a skag mounted rudder. Safety is a powerful 12kw radar that sees the small wooden fishing boats at night.



COMFORT: Weight equals comfort in a seaway no quick motions no pounding. Lightweight carbon fiber sandwich construction was never considered. Comfort is an interior laid out for use in a seaway. Comfort is sleeping on a queen sized innerspring mattress. Comfort is being surrounded by a beautiful solid teak interior enjoying properly engineered seating covered in luxurious fabrics.



FAST: Start with a hull with sweet, easily driven lines that are most pleasing to the eye. Add a deep keel and a tall bendy mast with triple spreaders, rod rigging and fully battened North Spectra sails. Infinity's cutter rig has a high sail area to displacement ratio. Control all this with electric winches and a Navtec hydraulic back stay and boomvang system. All this adds up to a fast cruiser, 200+ mile days are common.



BUILDER: Ta Yang Yacht Building Company

DESIGNER: Pieter Beeldnijder

SEA TRIALS: July 2000

LAYING: Langkawi, Malaysia

Dimensions:

L.O.A	58' 0"
L.W.L.	45'11"
DRAFT	7'2"
DISPLACEMENT	48,400lbs
BALLAST (cast lead encapsulated)	17,600

CONSTRUCTION:

GRP hull, laminated w/hand-lay up according to Lloyds' specifications

Deck superstructure: sandwich construction

Thermal insulation $\frac{3}{4}$ " thick PVC foam above waterline

Engine bed w/steel top plates laminated in

Reinforcement: foam filled longitudinals, frames, and deck stiffeners

Chain-plates S/S

GRP rudder w/S/S rudder stock and reinforcement

Bronze sea-cocks and hull fittings all fully bonded

Hull, superstructure, mast, and boom Awlgriped

DECK EQUIPMENT:

Forespar tapered bendy aluminum mast with triple spreaders, faired and black awlgriped

Leisurefurl in boom furling system, faired and black awlgrip

Navtec discontinues rod rigging

Forespar carbon fiber reaching pole mounted on a track on mast, black awlgriped

Dutchman boom brake

Maxwell 3500lbs anchor winch w/handheld remote in sail locker and remote at helm

8 oversized S/S cleats

Varnished teak toe and cap rail (2007)

Navetec system 50 hydraulic boomvang and backstay, pump at helm

2 No 66 S/S self tailing electric 2 speed Lewmar winches

2 No 54 S/S self tailing electric Lewmar winches
1 No 48 S/S self tailing electric Lewmar winches
2 No 44 S/S self tailing electric Lewmar winches
2 No 40 S/S self tailing Lewmar winches
Reckman hydraulic furling system genoa and staysail, controls at helm
All running rigging Tecnora/Spectra blend
CQR 107lbs w/300ft chain (regalvanized late 2006)
Fortress FX125 storm anchor
Switlik 6 man life raft in hard canister on aft deck (service due)
Lifesling mounted on radar arch
13hp Side-power Bow Thruster
Teak track wedges
Teak decks
Novurina center console 3.5 meter RIB w/25hp Yanmar 4 cycle tilt and trim new boat cover. Carried
in chocks on foredeck
Achilles inflatable dinghy w/hypalon inflatable floor 8hp Yamaha
Force ten propane barbecue
Full Sunbrella boat cover
Custom S/S teak grated pasorale
S/S swim latter
Deck shower hot-cold
Deck wash down, salt water and fresh water
Teak seats on pushpit
Jack lines
Hard dodger with opening hatch forward

DIVE EQUIPMENT:

Electric Dive Compressor in lazarette
2 x Aluminum dive tanks on pushpit {room for 3}
2 x BCDs
2 x spear guns
2 x Hawaiian slings
Lots of fins, masks and snorkels

ENGINE ROOM:

Yanmar 140hp engine
Walker Airsep
Scatra 14100 coupling system
PCI dripless shaft seal
Feathering Max Prop
Spurs Line cutters
Northern lights 10kw generator w/sound shield
3500w Trace inverter (240v 50htz) 100amp battery charging (new 2006)
2 x Par engine room blowers (in-out)
2 x Marine Air water chillers (all cabins have air handlers w/digital thermostats) (2007)
60 gallon per hour water maker
Paragon Sr. fresh water pump w/5gl accumulator tank
Fire Boy Halon fire control system
Emergency bilge crash pump mounted on engine
Wabasco diesel water heating system (all cabins have air handlers w/thermostats)
Glacier Bay Whisper Jet refrigeration compressor (24V) (2007)
Racor dual turbine filters #500FGSS-2

Oil change system for engine and generator
2 x 2500gl per hour bilge pumps (1 mounted forward of watertight engine room bulkhead)
Workbench w/vise
Access door from galley to service engine, walk in door from aft shower, full headroom, at workbench. Hatch above workbench (to cockpit) allows foul weather gear to be hung up in engine room.
Sound insulation
Diamond tread sole

ELECTRICAL INSTALLATIONS:

Custom Service Panel backlit white when circuit off red when on, digital amp and voltage meters.
12V.D.C. 24V.D.C 220V.A.C. WEMA fuel and water gages
House Bank: 16 deep cycle 6V Batteries = 880amps @24V
Engine and generator have their own starting batteries w/parallel switch
Grounding screen molded into hull
Newmar 50 amp 24v to 12v converter
Link 10 system
Trace inverter 3500 watt @ 230V.A.C. w/100amp battery charging
2 x Siemens 120w solar panels

ELECTRONICS:

Furuno 12kw radar 12" CRT at nav station 10" CRT repeater in cockpit 6' open array antenna
Furuno GPS Navigator GP-80 w/DGPS
Furuno Fax-207 weather fax
ICOM IC-M710 SSB
ICOM AT 130 automatic antenna tuner
ICOM IC-M127 VHF
ICOM IC-M1 handheld VHF
Pactor PCT-II Multimode Controller
B&G Hydra analog wind and depth instruments, full function digital display at nav station, NEMA full function digital display at helm
Interphase Twin Scope side and forward scanning sonar
W-H Autopilot with 2 hydraulic pumps, hand held remote w/25ft line from helm, control head at companionway
TANKWATCH 4 monitor system for holding tank
Built in PC with 19" LCD monitor used for navigation programs, TV viewing and DVD movies
Latest available cmap charts for entire world
CMAP 4 Chart program
MaxSea for Windows XP chart program
Satellite 406 EPIRB (service due)
ALTEC 5.1 surround sound speaker system
HP Color Printer
HP Scanner
KENWOOD am/fm radio
KENWOOD 10 disk CD player
MTX 400 watt amplifier
Boston Speakers with crossover network
Bose speakers in cockpit
Sony Karaoke system
Satellite TV

INTERIOR:

Solid Burmese teak staves throughout
Solid teak doors
Teak and holly sole
Hanging lockers cedar lined
Black granite counter tops in galley and heads
Black granite sole in heads and showers
26 x S/S opening ports
5 x S/S hatches
Automatic lights in hanging lockers
Sugatsune gold push latches throughout
All lighting fixtures gold plated
Backlit stained-glass window Tiffany copy using original Tiffany glass in salon
Handcraft 9 1/2" innerspring pillow top mattresses in foreword and aft cabin
Handcraft latex mattresses in port cabin
Etched glass shower doors
Custom black porcelain sinks in galley and heads
Black Sealand Vacuflush heads
All seating poly-Dacron wrapped engineered foam
Decorator fabrics throughout
Burlwood dining table with ebony inlay
Locking floorboards
15 x Hella fans
Splendede washer/dryer
Screens for all opening ports and hatches

GALLEY:

Force 10, 3-burner stove with glass oven door and thermostat
Refrigerator and freezer with top and front opening doors Glacier Bay vacuum panel insulation system
Built-in microwave
U-Line ice maker
Food processor
Bread maker
Coffee/espresso maker
Toaster
Juicer
Trash compactor
Cutlery, dishes and every thing needed for a well-equipped galley is included, except pots and pans, which are not included.
Liquor cabinet
Chopping block cover over stove
2 x deck prisms

STEERING SYSTEM:

Cable steering
Emergency tiller
W-H Autopilot with 2 hydraulic pumps, hand held remote w/25ft line from helm

SAILS:

Mainsail: North Spectra full batten 1 season of use left

Headsail: Needs replacement

Forestaysail: North Spectra 1 season of use left

Downwind: North norlon 1.5oz True Radial EX Gennaker w/Snuffer plus, 18' x 18' graphic inlay of Aztec Sun excellent condition

TANKAGE:

2 x aluminum fuel tanks capacity 800 liters

S/S water tank capacity 600 liters

GRP holding tank capacity 120 liters

Miscellaneous:

Spares for engine, generator, and other equipment to numerous to list

ITT generation 3 night vision scope

Fujinon binoculars

Hand bearing compass

All hand and electric tools need for a world cruise are included

The above items is not a complete inventory, in short every thing needed for a proper world cruising yacht is included, down to books to read and 34,000 songs to listen to. The present owner is only removing personal effects.

Infinity has just gone through an extensive refit including new: air con chillers, refrigeration compressor, bimmini, awlgriped coach house, dinghy cover all exterior varnish and interior varnish as needed, plus many other items. All possible preventive maintenance was done.

Cosmetically and mechanically Infinity is in pristine condition.

Infinity is ready to go today for a world cruise only the above noted items need attention.

Compare Infinity to a Swan or a Oyster and you will quickly conclude that Infinity is equal to or in most areas offers higher quality, especially the jointer work and at Infinity's low offering price you will see savings of 100s of thousands of dollars.

Offered at \$1,050,000 USD for quick sale. Price reflects items needing replacement or service.

CONTACT: Jim Eberhart +60 125 768 273 yachtinfinity@gmail.com