

**ATI & Royal Cargo All Souls Regatta**  
Saturday October 29th to Monday October 31st, 2011  
Puerto Galera Yacht Club  
Puerto Galera, Oriental Mindoro, Philippines

**SAILING INSTRUCTIONS**

**1 RULES**

**1.1** The regatta will be governed by the rules as defined in *The Racing Rules of Sailing*.

**1.2** Addendum B, Handicapping and Scoring, will apply.

**1.3** No national authority prescriptions will apply.

**1.4** Racing rule(s) 26, 27.3, 29, 30 and 61.2 will be changed as follows:

26. Starting Races - No signals will be given. Races will be run using a pursuit format. Each competitor will receive a start time for the day's race no later than the skippers meeting each day at 0900. The first start each day of the regatta will be 1100.

27.3 Before 1100 each day, the race committee may for any reason postpone or abandon the race.

29 Recalls - When at the prescribed start time for a boat, any part of her hull, crew or equipment is on the course side of the starting line, the skipper shall sail to the pre-start side of the line before starting.

30 Starting Penalties – If any boat breaks rule 29 and is identified, she shall receive without hearing a five minute penalty.

61.2 Protest Contents – amend this rule to include requirement (e) a protest fee consisting of one full case of cold beer.

**1.5** If there is a conflict between languages the English text will take precedence.

**2 NOTICES TO COMPETITORS**

Notices to competitors will be posted on the official notice board(s) located at the PGYC clubhouse.

### **3 CHANGES TO SAILING INSTRUCTIONS**

Any change to the sailing instructions will be posted before 0900 on the day it will take effect, except that any change to the schedule of races will be posted by 2000 on the day before it will take effect.

### **4 SIGNALS MADE ASHORE**

No signals will be made ashore.

### **5 SCHEDULE OF RACES**

#### **5.1 Dates of racing:**

<i>Date</i>	<i>Class</i>	<i>Races</i>
29 October	All	Reverse Talipanan
30 October	All	Verde Island Resort
31 October	All	Bulabod Beach

**5.2** The scheduled time of the first start all days is 1100.

### **6 RACING AREAS**

The racing area will be in various places in the Verde Island Passage in the vicinity of Puerto Galera

### **7 THE COURSES**

**7.1** The diagrams in Addendum A show the courses, including the approximate angles between legs, the order in which marks are to be passed, and the side on which each mark is to be left.

**7.2** The course number and type of course indicated in the schedule of races is the scheduled course for the day. If however conditions dictate, the Race Committee may use any of the courses in Addendum A for any of the races.

### **8 MARKS**

**8.1** The marks of the courses will be orange inflatable buoys, anchored boats and islands as described in Addendum A.

### **9 THE START**

**9.1** All races for the regatta follow a pursuit race format. Each competitor will be given a start time for each race based on his PGY rating.

**9.2** Starting times will be posted no later than 0900 the day of the race.

**9.3** The starting line will be between a staff displaying an orange flag on Lanes pier and a man overboard "MOB" pole with a red flag..

**9.4** Boats shall avoid the starting area until five minutes prior to their start.

## **10 THE FINISH**

The finishing line will be in the vicinity of Haligi Beach. The finish line will be between an inflatable orange buoy and an orange flag on the race committee boat. The committee boat will be left to starboard when finishing for all races. Please note that the orientation of the finish line may change each day depending on the conditions.

## **11 TIME LIMITS**

**11.1** Time limits are as follows:

<i>Class</i>	<i>Time limit</i>
IRC	1700
PY Cruiser/Racer	1700
PY Cruiser	1700
PY Multi-Hull	1700

**11.2** Boats failing to finish within the time limit will be scored Did Not Finish. This changes rules 35 and A4.

## **12 PROTESTS AND REQUESTS FOR REDRESS**

**12.1** Protest forms are available at the race office. Protests shall be delivered there within the protest time limit.

**12.2** For each class, the protest time limit is 1730 the day of the race

**12.3** Notices will be posted within 30 minutes of the protest time limit to inform competitors of hearings in which they are parties or named as witnesses. Hearings will be held in the jury room, located at the PGYC clubhouse office beginning at 1800.

## **13 SCORING**

**13.1** In all classes a boat's score will be the total of her race scores.

## **14 RADIO COMMUNICATION**

A boat shall neither make radio transmissions while racing nor receive radio communications not available to all boats. This restriction also applies to mobile telephones.

## **15 PRIZES**

**15.1** Prizes will be awarded daily at 1830 hours at the PGYC club house for the first 3 places in each class.

**15.2** Overall trophies will be given for the first three places in each class during the Awards Party on Monday evening, 31 October.

**15.3** Overall trophies for the regatta will be presented during the Awards Party on Monday evening 31 October.

**15.4** Other prizes may be awarded at the discretion of the organizing committee.

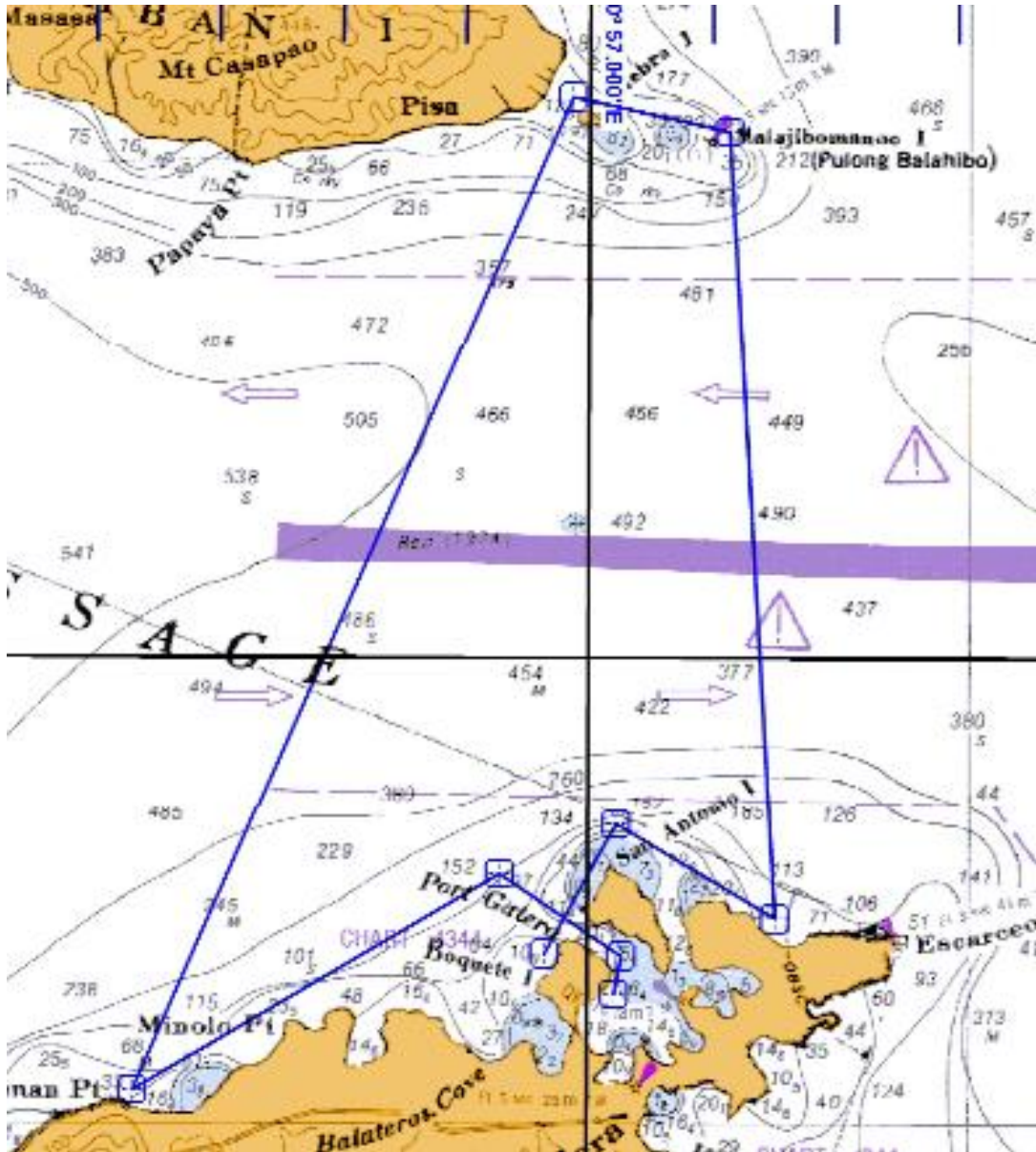
**16       DISCLAIMER OF LIABILITY**

Competitors participate in the regatta entirely at their own risk. See rule 4, Decision to Race. The organizing authority will not accept any liability for material damage or personal injury or death sustained in conjunction with or prior to, during, or after the regatta.

## ADDENDUM A

Waypoints shown are for reference only. See Descriptions for course details.

### Reverse Talipanan – Length 23.64 NM



Description:

Start,

To Talipanan (leave Orange mark to starboard)

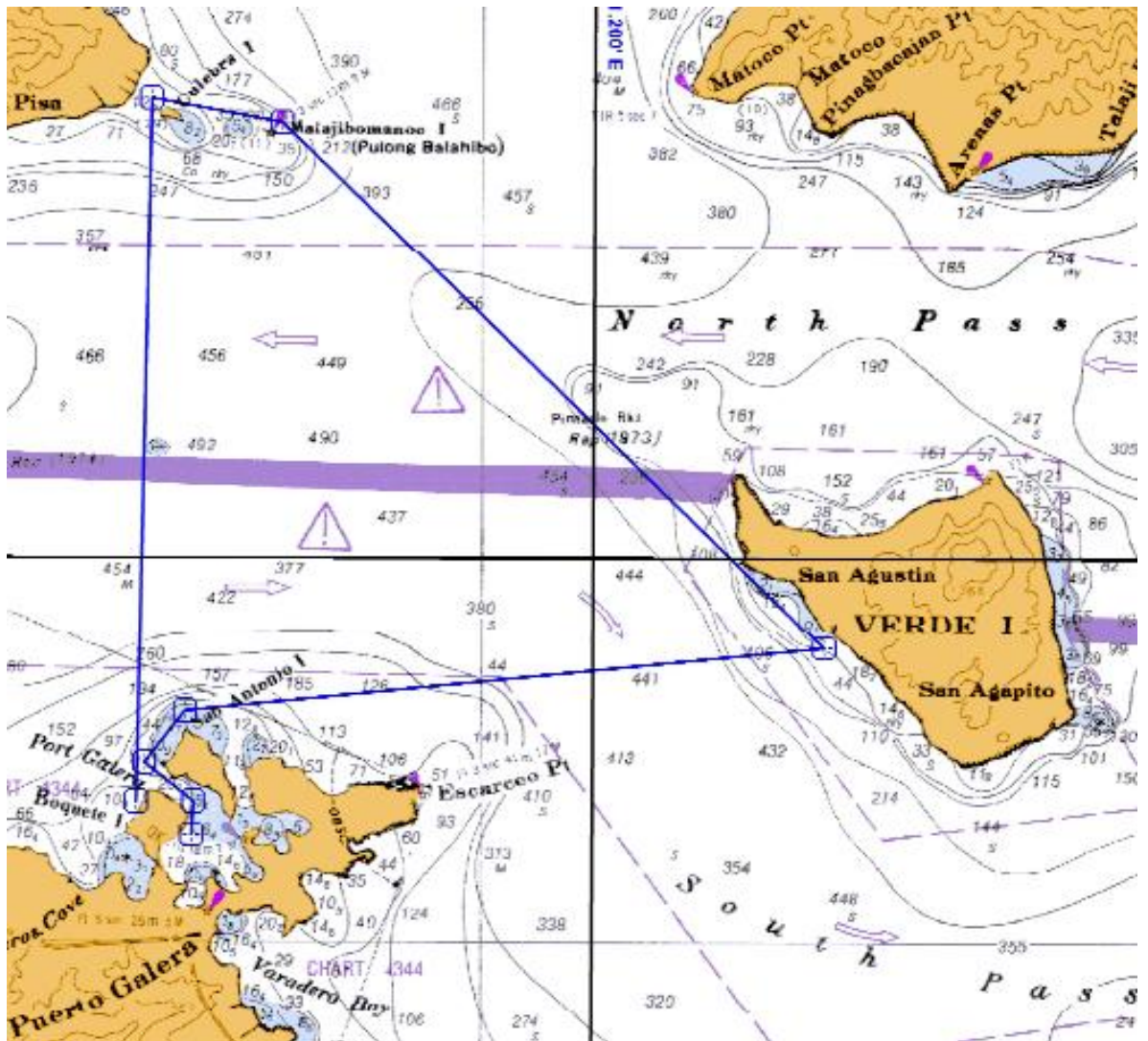
to Culebra Island (leave to starboard)

to Malajibamanoc Island (leave to starboard)

To Small La Laguna Beach (leave Orange mark to starboard)

to Halig Beach Finish

## Verde Island Resort – Length 23.65 NM



Description:

Start,

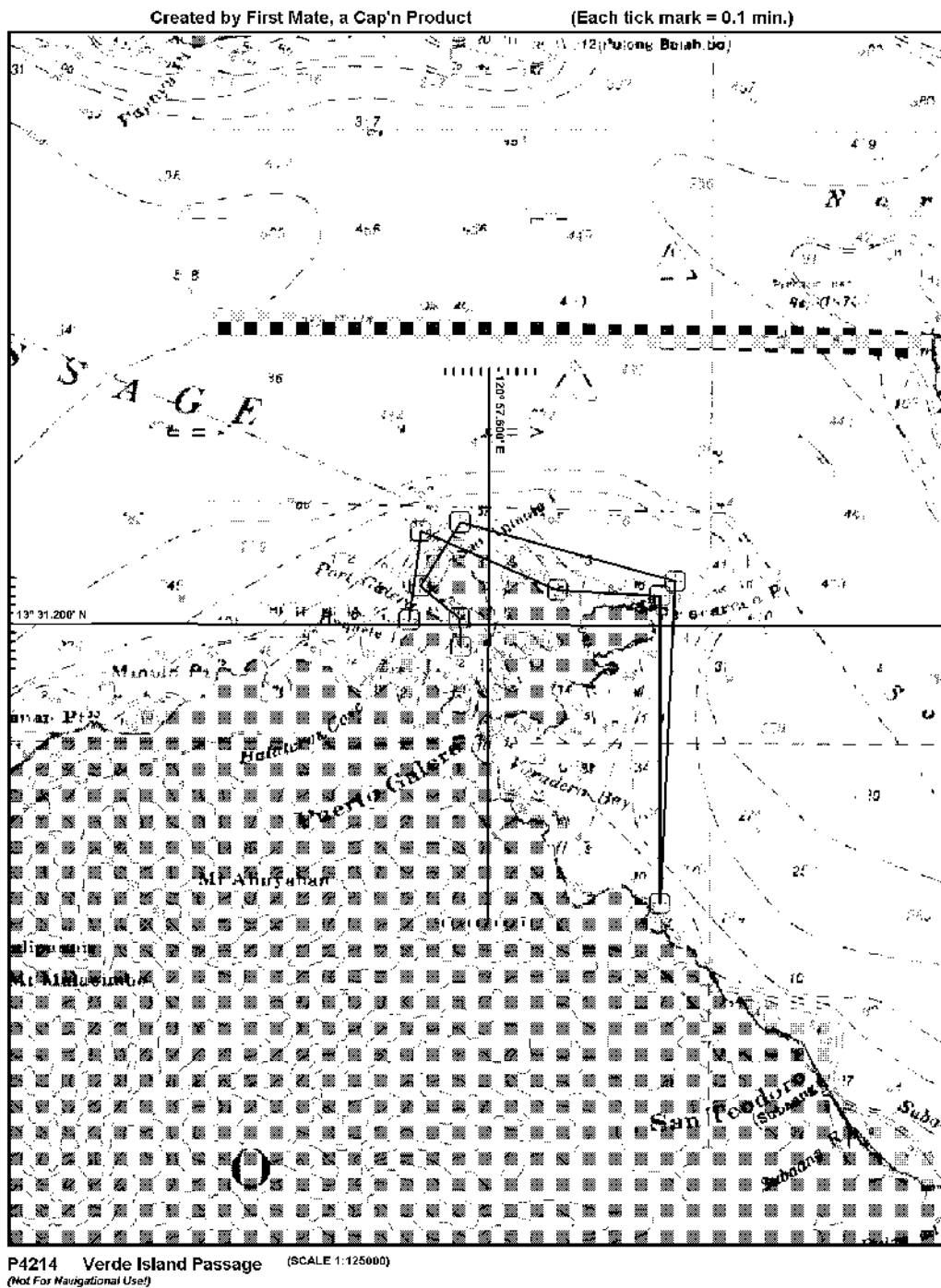
To Verde Island off Verde Island Resort (leave Orange mark to port)

to Malajibamanoc Island (leave to port)

to Culebra Island (leave to port)

to Haligi Beach Finish

# Bulabod Beach Course – Length 14.8 NM



Description:

Start,

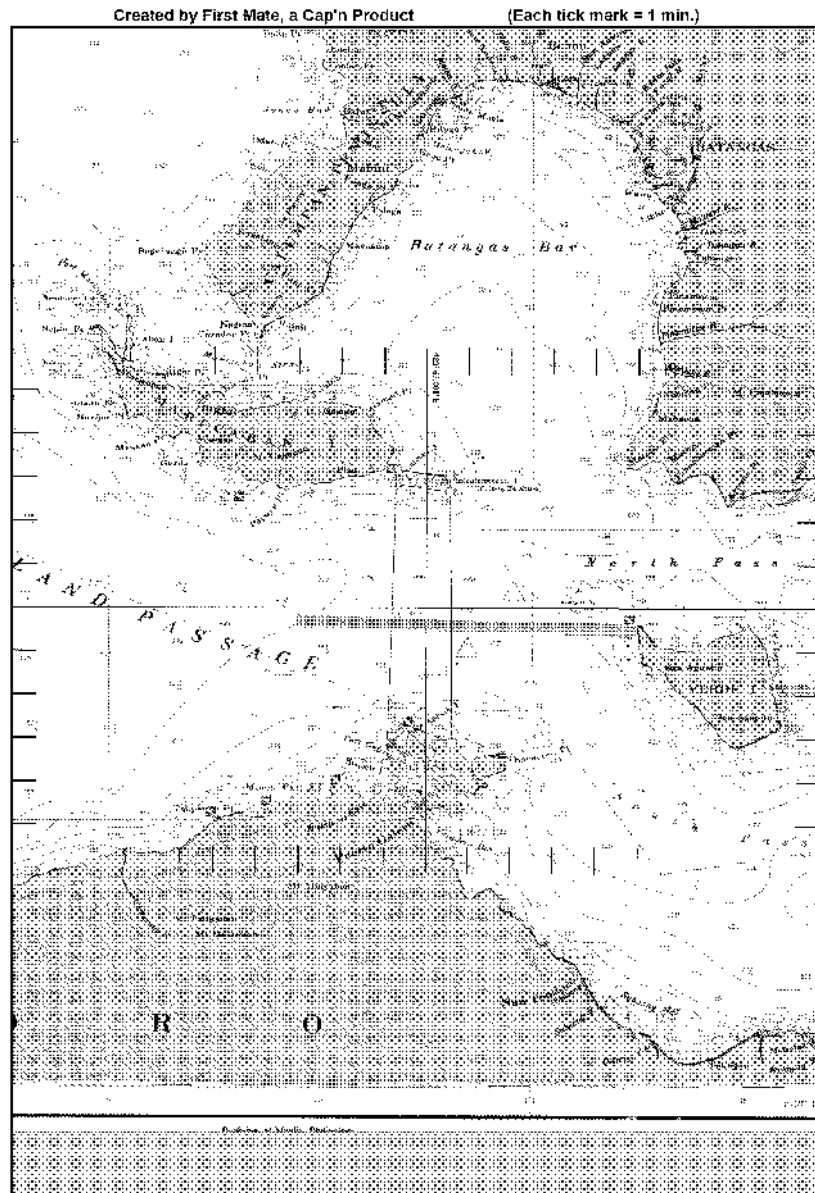
to Bulabod Beach (leave orange mark to port)

to Small La Laguna Beach (leave Orange mark to starboard)

to Haligi Beach Finish



# Chicken Feather Long Course – Length 20.17 NM



## Description:

Start,

to Small La Laguna Beach (leave Orange mark to port)

to Malajibamanoc Island (leave to port)

to Culebra Island (leave to port)

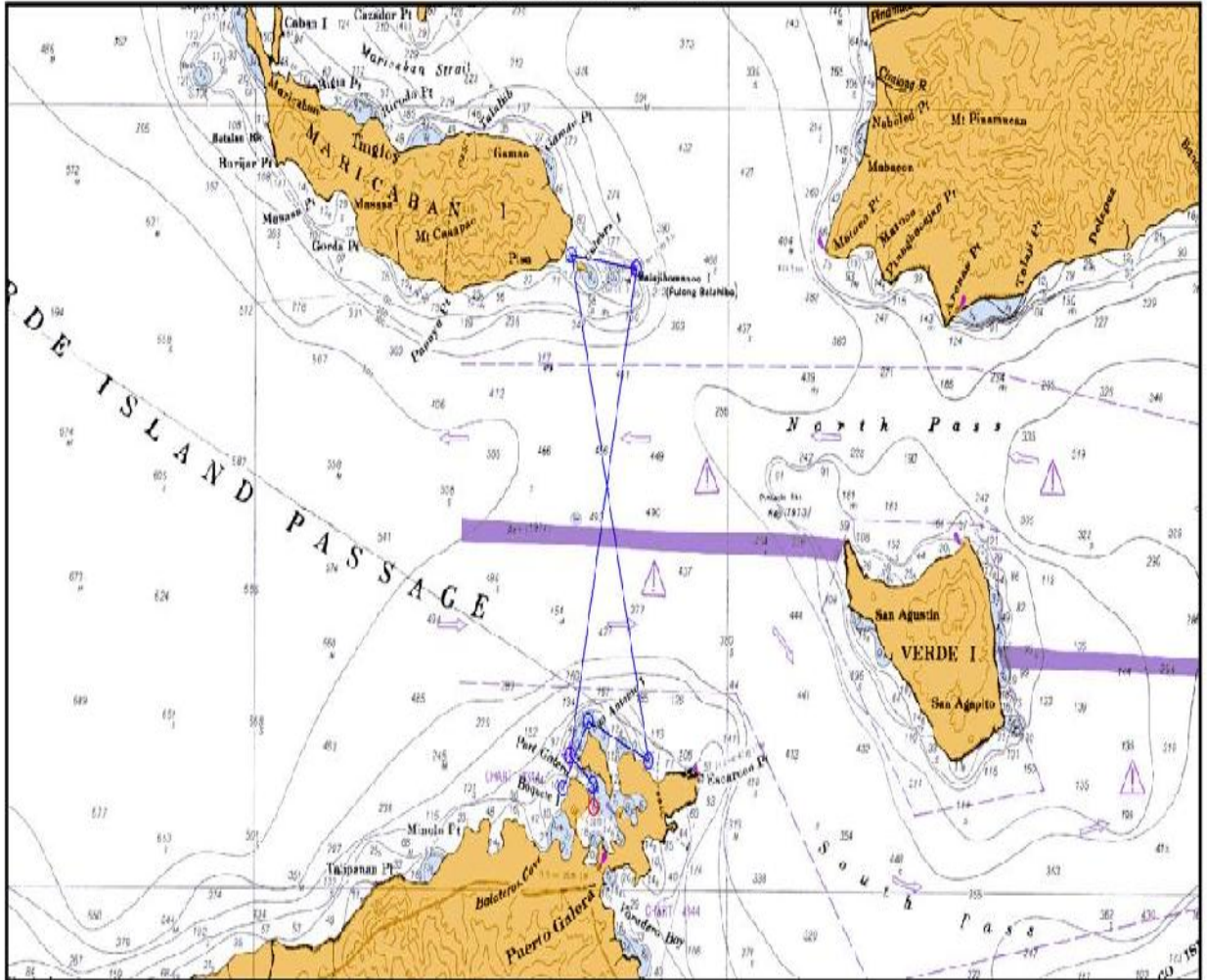
to Malajibamanoc Island (leave to port)

to Culebra Island (leave to port)

to Haligi Beach Finish

# Chicken Feather Shuffle – 17.64 Nautical Miles

Produced by the Cap'n



P4214 Verde Island Passage (SCALE 1:125000)

(Not For Navigational Use!)

Description:

Start

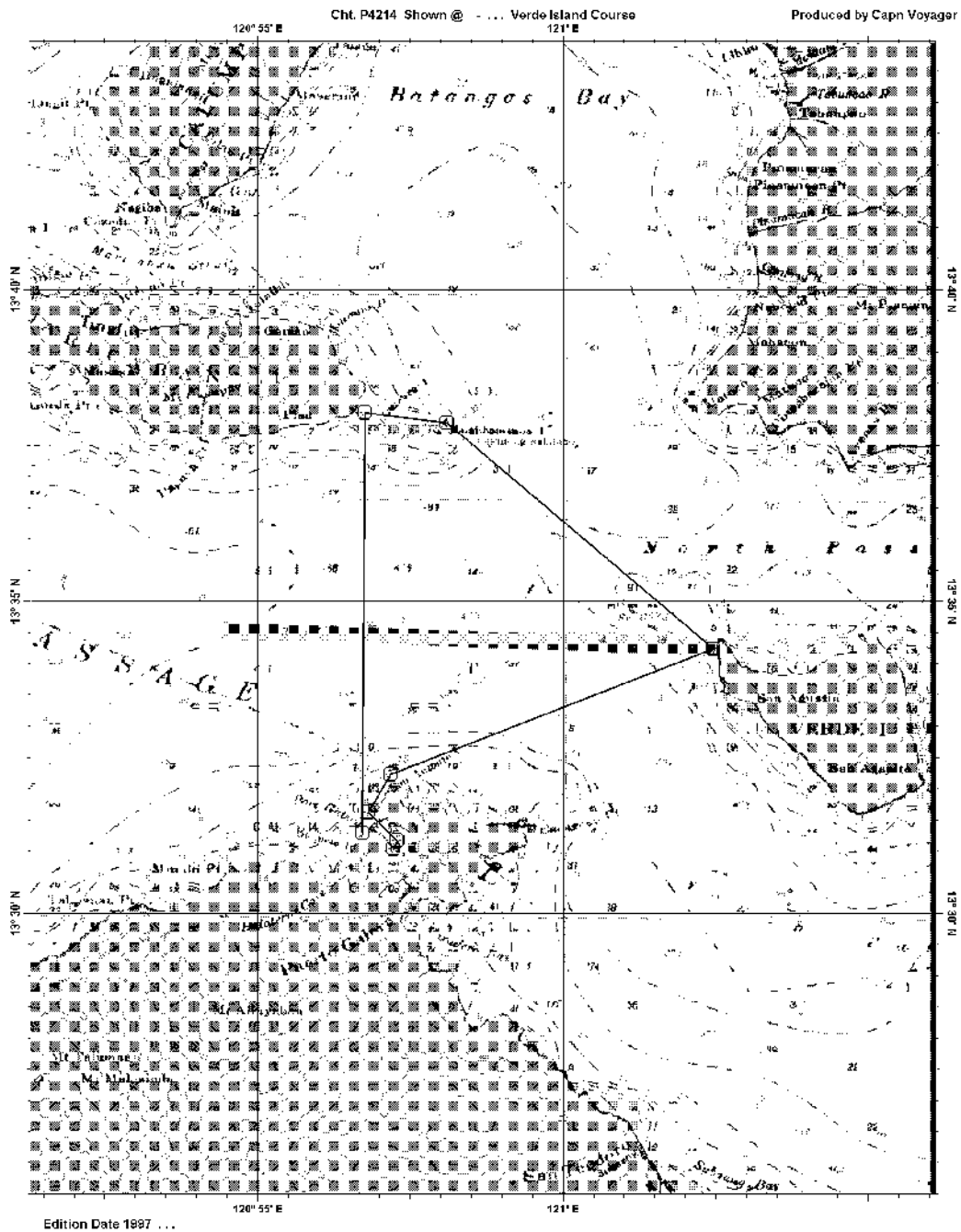
to Malajibamanoc Island (leave to port)

to Culebra Island (leave to port)

to Small La Laguna Beach (leave Orange mark to **starboard**)

to Haligi Beach finish

# Verde Island Course – Length 20.7 NM



## Description:

Start

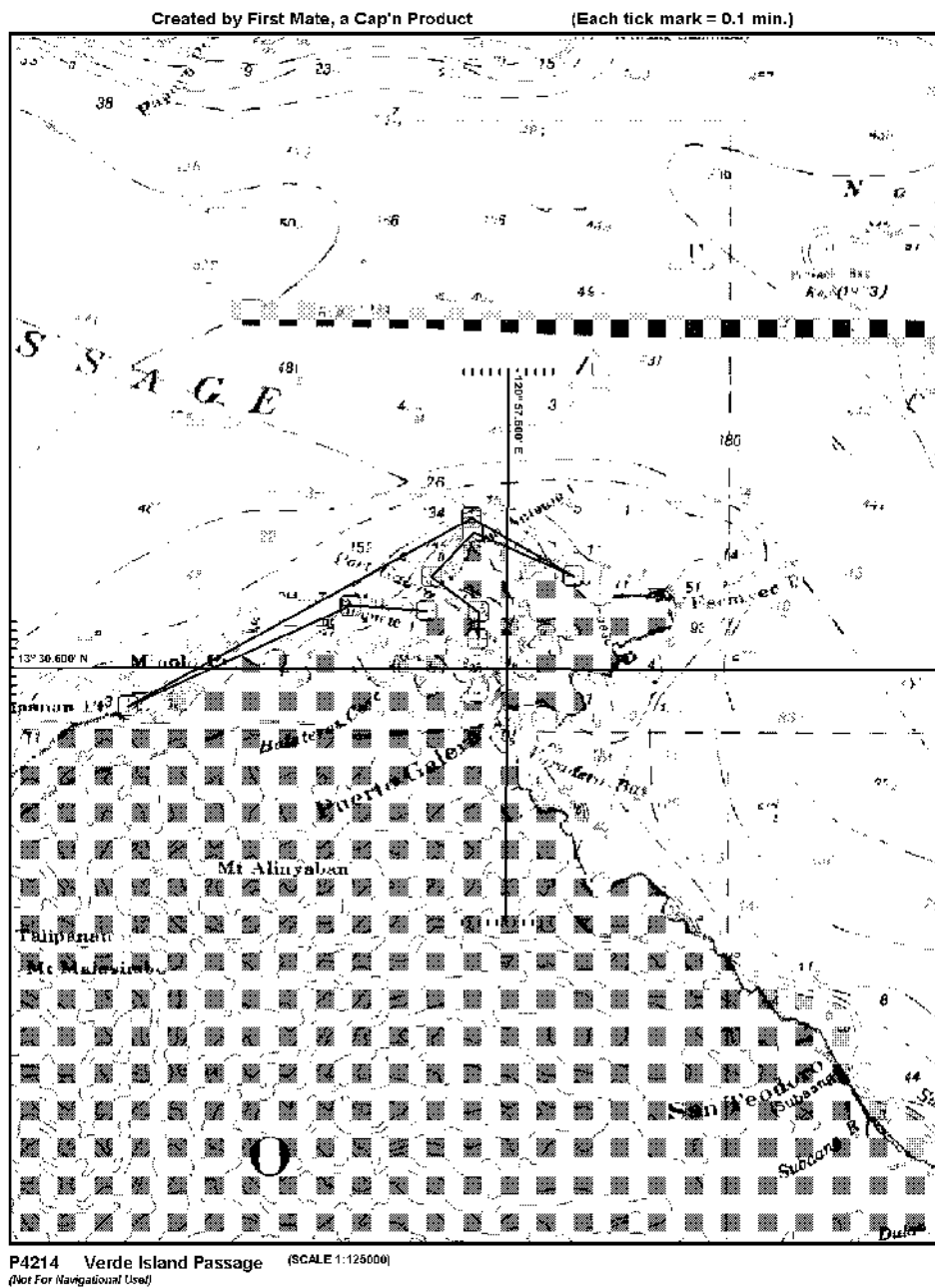
to Northwest tip of Verde Island (leave orange buoy to port)

to Malajibamanoc Island (leave to port)

to Culebra Island (leave to port)

to Haligi Beach Finish

## Talipanan Short Course – Length 11.9 NM



Description:

Start

To Small La Laguna Beach (leave Orange mark to port)

To east side of Talipanan Point (leave Orange mark to port)

to Haligi Beach Finish

## **Addendum B**

### **Handicapping**

The PGYC All Souls Regatta will use a pursuit racing format for all races.

Start times will be based on PGY Performance Handicap System ratings for all boats regardless of class.

PGY ratings are based on published PY ratings if available or by imputed ratings calculated from past races in Puerto Galera

For boats without published PY ratings, an adjustment to the PGY rating may be made after Race 1 at the discretion of the race committee.

### **Scoring**

Daily results for PY classes will be scored based on order of finish.

Daily results for the IRC class will be based on corrected elapsed times.

Overall results will be awarded based on order of finish for all classes.