

Royal Cargo All Souls Regatta 2021

Saturday 30th October to Monday 1st November 2021

Puerto Galera Yacht Club

Puerto Galera, Oriental Mindoro, Philippines

SAILING INSTRUCTIONS

1 RULES

1.1 The regatta will be governed by the rules as defined in *The Racing Rules of Sailing*.

PGYC Handicap System as administered by the Race Committee. Ratings for boats without previously published ratings may be adjusted after Race 1 at the discretion of the race committee.

1.2 All races will be completed using a pursuit race format. The object of “Pursuit Racing” is that the theoretical slowest boat starts first and the fastest boats start last. In theory all boats should finish simultaneously. The winner in each division is the first yacht to cross the finish line.

1.3 The Notice of Race (unless amended by the Sailing Instructions)

1.4 Rules as per these Sailing Instructions

1.5 The Racing Rules will be changed as indicated:

26. Starting Races - No starting signals will be given. Races will be run using a pursuit format. Each competitor will receive a start time for the day’s race no later than the skippers meeting at 0900 daily. The first start each day of the regatta will not be before 1000, subject to confirmation at the 0900 Daily Skipper’s briefing.

27.3 Before the Start Time each day, the race committee may for any reason postpone or abandon the race, via announcement at the Skippers Briefing and/or by cell phone message to skippers.

29 Recalls - When at the prescribed start time for a boat, any part of her hull, crew or equipment is on the course side of the starting line, the vessel will incur a starting penalty. *NB no recall signal will be made by the starting boat.*

30 Starting Penalties – If any boat breaks rule 29 and is identified, she shall receive, without hearing, a penalty equivalent to double the time she was early crossing the line, plus an additional 5 minutes will be added to her finish time if she starts more than thirty seconds early.

31. Rule 44.1 is changed so that the Two-Turns Penalty is replaced by the One-Turn Penalty

61.2 Protest – If a formal protest is made a fee shall be levied before the protest hearing. To be heard a formal written protest must be lodged with the Club Office before 1725 on the day of the race. The Protest Committee may apply a time penalty for any infraction of the rules.

1.6 In case of conflict between any of the above, succeeding items take precedence. This changes RRS 63.7

2. NOTICES TO COMPETITORS

Notices to competitors will be posted on the official notice board located at the PGYC clubhouse. Plus they will be announced at the Daily Skipper's Briefing

3 CHANGES TO SAILING INSTRUCTIONS

Any change to the sailing instructions will be posted before 0900 on the day it will take effect. Plus it will be announced at The Daily Skippers' Briefing.

4 SCHEDULE OF RACES

4.1

Saturday 30th October	First Start Not before 1000
Sunday 31 st October	First Start Not before 1000
Monday 1 st November	First Start Not before 1000

5 RACING AREAS

The racing area will be in the Verde Island Passage in the vicinity of Puerto Galera. See Addendum A, Sheet 4.

6 THE COURSES

6.1 The documents in Addendum A (attached) include:

1. Course Sheet.
2. A list of approximate coordinates of marks
3. A list of flags that may be used.
4. A chart with marks.

6.2 The course to be sailed will be published on the Official Notice Board before 0900 each day and announced at the daily Skippers' Briefing.

6.3 In the event of necessity to shorten course, EITHER a committee boat flying the S flag will be stationed at the new finish OR boats will be informed of the new finish by VHF or mobile phone.

7 MARKS

7.1 The marks of the courses are orange buoys, navigation buoys and islands as described in Addendum A. Virtual marks may also be set using GPS waypoints.

7.2 If a boat hits a mark they will promptly complete a 360 degree turn

7.3 VIRTUAL MARKS Virtual marks may be set as latitude and longitude coordinates representing GPS waypoints. These coordinates will be posted on the Club notice board by 0900 on the day of the race and will be announced at the Skippers Briefing. A yacht 'rounds' a virtual mark by sailing through the waypoint before heading for the next mark. Yachts that have 'rounded' a virtual mark shall stay clear of any yacht that is still to 'round' the mark. *Note no record will be taken by the race committee of 'rounding' virtual marks. However competitors are advised to keep proof of 'rounding' in case of protest.*

8 THE START

8.1 All races for the regatta follow a pursuit race format. Each competitor will be given a start time for each race based on their PGYC rating and the length of the course for the day.

8.2 Starting times will be posted no later than 0900 the day of the race.

8.3 The starting line will be between an orange flag at the end of Lane's Pier (N 13° 30.91' E 120° 57.08') at the Port end and an orange buoy at the Starboard end.

8.4 Boats are racing from 4 minutes before their published start time. Therefore engines must not be run in gear after this time. Please stay clear of the start line until this time.

8.5 At all times boats must use G.P.S. time for starting and finishing. The PGYC Committee Boat will record Start and Finish times. If the course is shortened such that there is no Committee Boat at the finish mark entrants shall declare their finish time and the boats immediately in front and behind, to the Race Committee. Declarations may be made in person, by VHF or by text message to the Club Office. Declarations must be made before 1730, failure to do so will result in a DNF.

9 THE FINISH

9.1 The finishing line will be in the vicinity of Haligi Beach. (N 13° 31.2' E 120° 56.5') unless otherwise stated at the Skippers' briefing and posted on the club notice board.

9.2 The finishing line at Haligi Beach will be between an inflatable orange buoy inshore at the Port end, and an orange flag on a committee boat at the Starboard end. NB: Leave the Committee Boat to Starboard.

10 TIME LIMITS

10.1 The time limit for all races is 1700.

10.2 Boats failing to finish within the time limit will be scored the number of boats in their class plus 1 point. For the Overall Score they will be scored the number in the Regatta Fleet plus 1 point. This changes rules 35 and A4.

10.3 If a boat withdraws from a race there is no requirement to cross the finish line.

11 PROTESTS AND REQUESTS FOR REDRESS

11.1 Protests shall be lodged at The PGYC office together with the protest fee within the protest time limit.

11.2 For each class, the protest time limit is 1725 the day of the race

11.3 Notices will be posted within 5 minutes of the protest time limit to inform competitors of hearings in which they are parties or named as witnesses. Hearings will be held in the jury room, located at the PGYC clubhouse office beginning at 17.30. If a protest is upheld by the Race Committee they may, at their sole discretion, impose a time penalty on the boat protested. *Note if either party to the protest fails to show up on time the result of the hearing may be determined by the Race Committee, at their sole discretion, based on the evidence given by any attending party and corroborating witnesses, if any.*

12 SCORING

12.1 Daily Results for PGYC Handicap System will be scored based on the order of finish.

12.2 A boat's overall score will be the total of her race scores using the Low Point System.

13 RADIO COMMUNICATION

13.1 While racing a boat shall neither make nor receive radio communications not available to all participants.

13.2 As a safety precaution all boats are expected to monitor the race control VHF channel while racing. Because of poor VHF coverage in this area, participating yachts must supply the Race Committee with a cell phone number, to communicate messages such as Shortened Course or Abandon Race.

14 PRIZES

14.1 On Saturday and Sunday daily prizes will be awarded at 1800 hours at the PGYC clubhouse for each class.

14.2 Class Winners and Overall Trophies will be presented at the Awards Party on Monday afternoon 1st November . The time and location of the prize giving will be announced at The Skippers Briefing that morning. In the event of there being fewer than four entries in any class only one competitor in that class shall be eligible for an overall trophy.

14.3 Other prizes may be awarded at the discretion of the organizing committee.

15 DISCLAIMER OF LIABILITY

Competitors participate in the regatta entirely at their own risk. See rule 4, Decision to Race. The organizing authority will not accept any liability for material damage or personal injury or death sustained in conjunction with or prior to, during or after the regatta.

ADDENDUM A SHEET 1 COURSE SHEET

Course	Mark	Mark	Mark	Mark	Mark	Mark	Mark	Dist
RACING								
1	Start	6. PORT	Chic Fth Port	Culebra Port	15. FINISH			25
2	Start	2. STBD	Chic Fth Port	Culebra Port	Chic Fth Port	Culebra Port	15. Finish	23
3	Start	2. STBD	4. STBD	15. FINISH				27
4	Start	7. STBD	10. STBD	15. FINISH				23
5	Start	7. STBD	8. STBD	10. STBD	15. FINISH			27
6	Start	8. STBD	10. STBD	15. FINISH				17
7	Start	Round Verde	15. FINISH					23
8	Start	14. STBD	5. STBD	15. FINISH				22
9	Start	Chic Fth Stbd	11. STBD	15. FINISH				23
10	Start	Chic Fth Port	Culebra Port	Chic Fth Port	Culebra Port	FINISH		21
11	Start	Chic Fth Port	Culebra Port	14. PORT	15. FINISH			23
12	Start	Chic Fth Port	Culebra Port	Chic Fth Port	Culebra Port	14. PORT	15. Finish	26
13	Start	7. PORT	Chic Fth Port	15. Finish				25
CRUISING & MULTI								
14	Start	2. STBD	3. STBD	15. FINISH				18
15	Start	3. PORT	2. PORT	15. FINISH				18
16	Start	5. PORT	4. PORT	15. FINISH				22
17	Start	7. STBD	15. FINISH					18
18	Start	4. PORT	3. PORT	15. FINISH				22
19	Start	11. PORT	15. FINISH					14
20	Start	Chic Fth Port	Culebra Port	15. FINISH				16
21	Start	Culebra STBD	ChicFth Stbd	15. FINISH				16
22	Start	6. PORT	15. FINISH					16
23	Start	7. PORT	15. FINISH					18
COMBINED FLEET								
24	Start	11. STBD	15. FINISH					14
25	Start	10. PORT	15. FINISH					16
26	Start	10. STBD	15. FINISH					16
27	Start	9. STBD	15. FINISH					16
28	Start	8. STBD	15. FINISH					17

NOTE These are 'standard courses' other courses may be declared depending on weather conditions. Such other courses will be announced at the skippers' briefing and posted on the Club notice board by 0900 on the day of the race.

SHEET 2
APPROXIMATE CO-ORDINATES OF MARKS

MARK #	NAME	ISLAND	GPS (N)	GPS (E)	DEPTH	COMMENT
1	START	LANE'S PIER	13 30.90	120 57.2	20	LANE'S PIER TO PORT & ORANGE BUOY TO STBD
2	PAPAYA POINT	MARICABAN	13 37.50	120 54.0	18	
3	MARK 3		13 37.62	120 57.7	20	SOUTH OF CHICKEN FEATHER
4	PINAGACAJAN Pt	LUZON	13 37.60	121 03.4	16	SOUTH OF RED & WHITE TOWER
5	VERDE 1	VERDE	13 33.20	121 02.9	16	San AUGUSTIN
6	VERDE 2	VERDE	13 32.35	121 03.9	15	OLD MARK
7	VERDE 3	VERDE	13 31.50	121 05.0	15	VERDI SOUTH - SAWONG
8	SAN TEODORO	MINDORO	13 27.15	121 00.2	15	STANSBURY BEACH
9	BULABOD	MINDORO	13 27.90	120 59.5	19	OLD MARK
10	OCEANA RESORT	MINDORO	13 28.46	120 58.5	12	IN FRONT OF OCEANA RESORT
11	SMALL TABINAY	MINDORO	13 29.40	120 57.8	18	IN FRONT OF SQUARES RESORT
12	ESCARCEO POINT	MINDORO	13 31.30	120 59.7	30	NEAR SABANG LIGHTHOUSE
14	TALIPANAN	MINDORO	13 30.08	120 53.2	20	LUCAS RESTAURANT ASHORE
15	FINISH BOAT	HALIGI BEACH	13 31.20	120 56.5	10	ORANGE MARK INSHORE AT PORT END & FINISH BOAT TO STBD
16	MINOLO	MINDORO	13 30.84	120 55.8	10	ORANGE BUOY OFF MINOLO BAY
17	ESCARCEO LIGHTHOUSE	MINDORO				TRANSIT BEARING 180°T FROM OLD LH TOWER AND RADAR MAST
18	N. Cardinal j	MINDORO	13 30.88	120 55.6		NORTH CARDINAL NAVIGATION MARK OFF BALATERO PORT

SHEET 3

FLAGS POSSIBLY USED DURING THE REGATTA.

- Class Flags

White – Racing

Yellow – Cruising

Pink – Multihull

- Flag Sheet



AP – Delayed start. Racing commences 6 min after dousing



N – Abandon Race



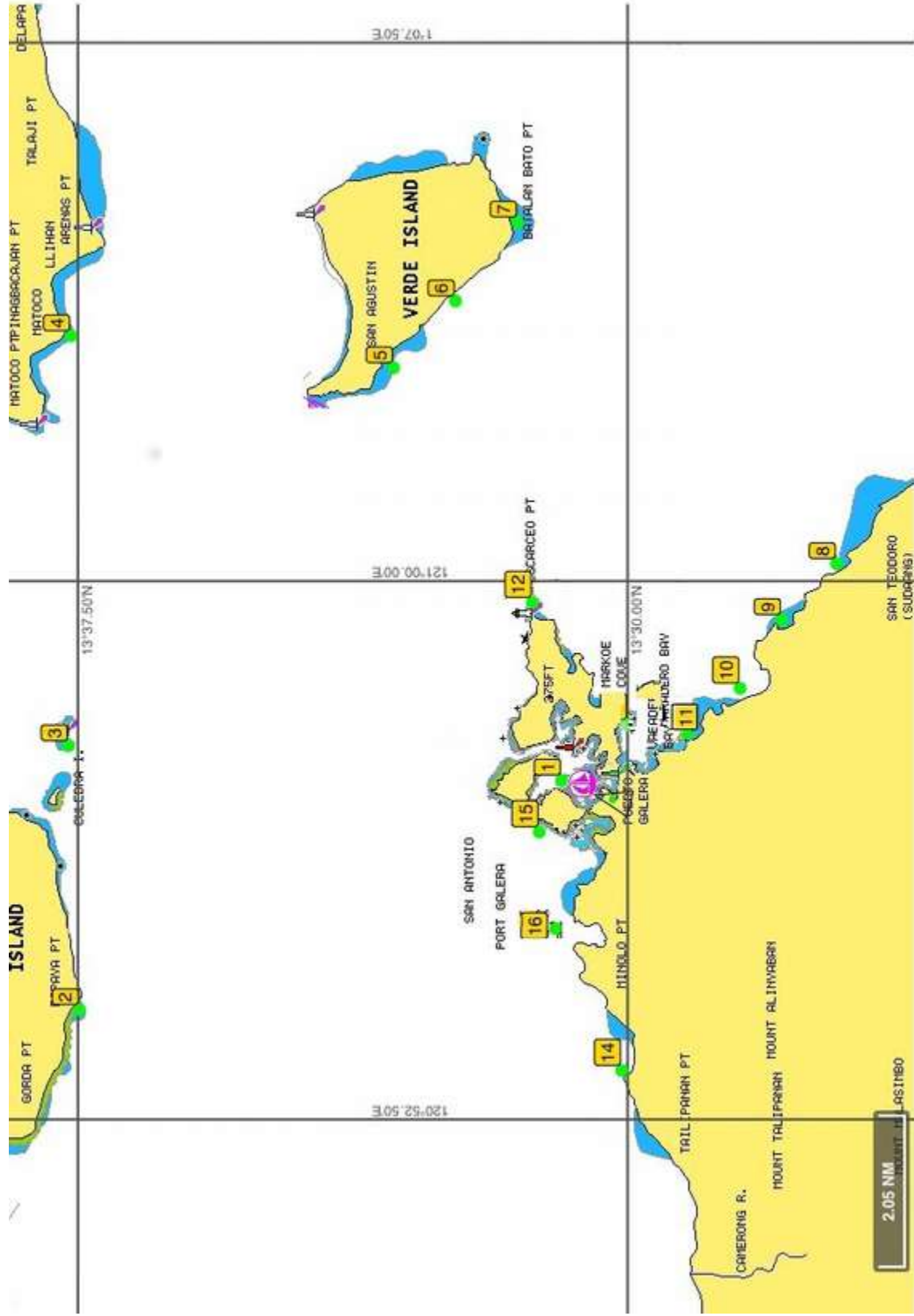
M – Replaces lost or stolen mark



S – Shorten course here. Committee boat will record finish times



C – Proceed straight to finish, ignore other marks. Time will be recorded at finish line



Sheet 4